



Sysco LOGIC

Brochure

www.sysco-software.com
T +353 1 6768900
T +44 28 90508550



sysco
SOFTWARE SOLUTIONS

APPLICATION OVERVIEW

Contents

Item	Page No.
LOGIC Summary of Functionality	1
LOGIC Standards	2
LOGIC Design	2
Purchase Order Processing	3
Sales Order Processing	4
Stock Control	5
Sales Ledger	6
Purchase Ledger	7
General (Nominal) Ledger	8
Business which benefit from LOGIC	9

LOGIC Overview and Business Benefits

LOGIC Summary of Functionality

LOGIC is a suite of fully integrated applications that provide management, control and reporting on all aspects of the Distribution industry.

A summary of the individual applications are as follows:

- **Purchase Order Processing** to manage and track goods for re-ordering, landed costing, multiple deliveries, goods receipt, put away lists or handheld terminal processing to aid warehouse management
- **Sales Order Processing** to control the sales of goods either by telephone, email or counter sales, complex but managed pricing structures, issue notes from warehouse, direct access to warehouse staff handheld terminals for the optimum pick routing, packing, issue from stock, scheduled delivery by customer, invoicing (including automatic EU waste disposal legislative requirements) and subsequent reporting and analysis
- **Stock Control** which controls and reports on stock availability, seasonal trends and calculated stock requirements. The extensive reports ensures management have all the up-to-date information required to provide adequate stock, without over stocking, to satisfy customer requirements
- **Sales Ledger, Purchase Ledger, General Ledger and Intrastat Reporting** all compliment the versatility and flexibility of the primary applications mentioned above.

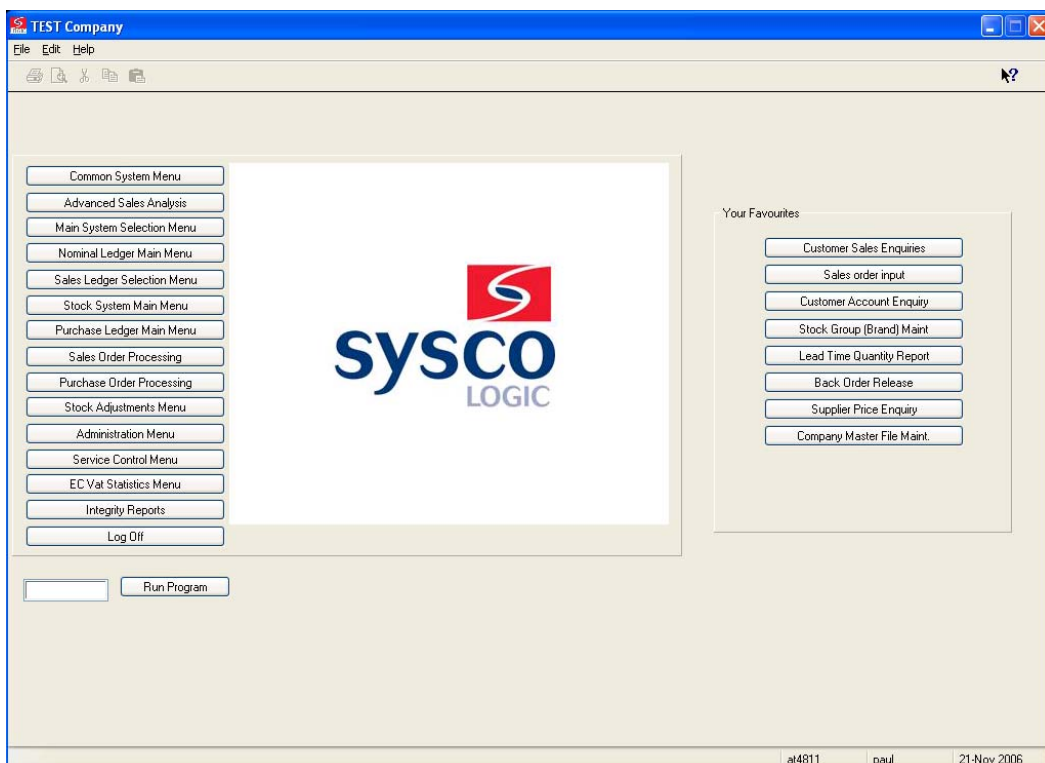
A more detailed description of the application functionality is given in the following pages with the exception of Intrastat Reporting which is a legislative standard.

LOGIC Overview and Business Benefits

LOGIC Standards

The following are standard throughout the LOGIC suite of applications:

- Recording of the user and date on every posting made to the system
- Documents can be re-printed. The only constraints of this feature is despatch documentation which will be clearly marked with the word “COPY” and recorded in a system activity log against the user who requested the copy
- All postings are made in real-time
- LOGIC is Internet Enabled and will be capable of taking orders from this media
- EU Legislation regarding “End of Life” charges for environmentally unfriendly waste will be included in the applications
- All memos which can be attached to master or transaction records can have an action date and action user attached. These will be displayed when these users are logging on
- Links to most of the popular report writers are available



LOGIC Design

LOGIC Overview and Business Benefits

LOGIC is a window based “out of the box” suite of applications. This means that development and, hence, implementation is minimised which has the dual benefit of reducing implementation costs and risk of failure.

LOGIC has a clever and innovative method of producing “custom made” solutions. This is through a series of parameter records which control the look, feel and functionality of the product. A few days of setup and the applications will be ready to accept the manual input or data conversion of master records from your old system. Integration to other Microsoft products is relatively simple.

The screenshot displays a software window titled "TEST Company - Customer Account Enquiry". The window has a menu bar with "File", "Edit", and "Help". Below the menu bar is a toolbar with various icons. The main content area is divided into several sections:

- Account Details:** Shows "H80" and "Houseworks (Cork) Ltd".
- Account Information:** Includes tabs for "Financial", "Current Transactions", and "History Transactions".
- Details:** A form with fields for:
 - A/c no: H80
 - Name: Houseworks (Cork) Ltd
 - Address: Unit C4 Donnybrook commerical Park
 - Douglas
 - Co. Cork
 - Post code: JL235
- Balance Base:** A list of values:
 - Balance Base: 31,355.23
 - Highest Ever: 31,355.23
 - Credit Limit: 126,973.00
 - Credit Status: O.K.
- Communication:** Fields for:
 - Tel: 021-4290116
 - Fax:
 - Contact: Helen
 - Comment:
 - Email:
 - Web:
- Account Information:** Fields for:
 - Terms: 30 Days
 - A/c type: Open item
 - Status: O.K.
 - A/c Open: Euro 04/08/2000

At the bottom of the window, there are buttons for "Input Range" and "Exit". The status bar at the very bottom shows "slesac", "paul", and "21-Nov 2006".

LOGIC Overview and Business Benefits

Purchase Order Processing

The key benefits and features of the LOGIC Purchase Order Processing System (POP) are as follows:

- Stock reorder report based on either set minimum or projected usage
- Purchase orders may be both produced automatically or input manually
- Purchase orders can be for both stocked and non-stocked items
- Purchase orders can reference the supplier's stock numbers and are priced in the supplier's currency
- During the manual input of purchase orders a view of the estimated cubic capacity being used will be displayed to enable best use of containers
- During the manual input of purchase orders a credit check can take place to ensure the suppliers limit is not exceeded
- Purchase orders may be printed, emailed or electronically transferred into the suppliers ordering system
- Additional costs such as insurance, freight etc. can be automatically added to order lines and accrued for automatically
- Reports and enquiries are available to track orders and produce projected delivery schedules
- Put away lists can be produced for incoming orders or directly uploaded to handheld terminals directing warehouse staff on the optimum stock locations to use
- Delivery details can be entered manually or uploaded from handheld terminals to match against the original order
- Details of picker, checker, number of boxes/pallets and date despatched are recorded against each delivery
- Possible release of back orders can be either manual or automatic during GRN input/import
- Supplier's invoices can be matched against deliveries, with the option of recalculating stock costs, if different and
- Supplier performance may be monitored, with both enquiry and report programs available.

LOGIC Overview and Business Benefits

Sales Order Processing

The key benefits and features of the LOGIC Sales Order Processing System (SOP) are as follows:

- Various classifications of orders: Affecting stock, affecting usage (stock projections) or not to affect either
- Recording of quotations, forward and pro forma orders
- Cash sales can be recorded and payments received. Links to cash drawers are standard
- Return of items, possibly under warranty, for repair or disposal
- Billing and reporting of automatic EU waste disposal charges
- Range of authorisation levels for non standard orders
- Price structures to include VAT inclusive/exclusive prices, special price/group lists, special promotional prices and offers of free product or discount if a basket of selected products are purchased
- Prices can be calculated in the currency of each customer
- Manual price overrides are recorded for later reporting
- Each order line will hold the source of the price used
- Option of recording back orders for customers and links to purchase ordering
- Option to print picking lists, advice notes and load sheets or a direct link to the warehouse management system handheld terminals.
- Automatic segregation of orders into customer and geographical delivery schedules
- Fast transfer to a variety of enquiry programs during order input
- Automatic handling of superseded stock and
- Extensive sales reporting with up to four years comparative history by month

LOGIC Overview and Business Benefits

Stock Control System

The key benefits and features of the LOGIC Stock Control System (SCS) are as follows:

- A unique feature of the LOGIC stock control system is its ability to management separate stock files within a multi-company environment or a single stock file for all companies. Accounting for “cross selling” is controlled automatically
- Stock selection and reporting by stock code, bar code, alpha search key, first line of description, four levels of stock groups and normal supplier
- Control of normal issue stock, stock stored for third party organisations, items for hire/return, including return under warranty, and batch and serial issue
- Stock movements can be record indefinitely and enquired into/reported on
- Maximum of 36 months usage (sales quantities) and minimum of 24 months usage held for each stock item and used for projections
- Automatic control of alternative and superseded stock
- Stock can be held in two units (e.g. dozens/singles) and purchased in two units (e.g. cases/singles)
- Reporting quantities can be calculated to a common unit (Fridge 4 units, toaster .05 units)
- Stock can be checked during working hours by “freezing” the stock
- Memo facility at account and transaction level as standard and
- All changes to master records can be logged and viewed at any stage.

LOGIC Overview and Business Benefits

TEST Company - Stock Details Enquiry

File Edit Help

Depot

Stock Code
 Elica Hood Basket

"A" Stock

Stock Costs

Average Unit Cost	<input type="text"/>
Total Average	<input type="text"/>
Latest Unit Cost	<input type="text"/>
Total Latest	<input type="text"/>

Dates And Movements

Current Issue Price	<input type="text"/>
Date Price Last Changed	<input type="text"/>
Previous Price	<input type="text"/>
Date Stock Introduced	27/10/2005
Date Last Sold/Issued	11/10/2006
Date Last Delivered	<input type="text"/>
Average Lag Time (Days)	<input type="text"/>
Date Of Last Stocktaking	01/06/2006
Stocktakings This Year	1

Stock Amounts

Stock In	<input type="text" value="Ones"/>
Book Stock	<input type="text"/>
Free Stock	<input type="text"/>
Supplier Orders	<input type="text"/>
Allocated Stock	1
Back Orders	<input type="text"/>
Forward Orders	<input type="text"/>
Minimum Stock Level	1

Stock Profit

Net Sales Value	104,499.65
Cost Of Sales	15,752.91
Gross Margin Value	88,746.74
Gross Margin Percentage	84.93

Stock Projections

Current Book Stock	<input type="text"/>
Total Units Last Year	64
Total Units This Year To Date	416
Projected Units This Year	450
Projected Stock Turnover	450.00

paul 21-Nov 2006

Sales Ledger

LOGIC Overview and Business Benefits

The key benefits and features of the LOGIC Sales Ledger (SL) are as follows:

- User definable payment terms with automatic calculation of due dates (though these dates may be overridden by the user during journal posting or order input).
- User definable means of payment, with credit card charges automatically deducted
- Post dated cheques can be posted, not allocated, and available for reporting
- Returned cheques can be re-posted
- Two alphanumeric search keys plus telephone number for each customer account
- Memo facility at account and transaction level as standard
- Cleared transactions can be held in an accessible history file
- Each account may be assigned analysis codes from up to three separate analysis classes (Representative, Region plus one other). These analysis classes can be used to select accounts listed in reports
- Aged debt and detail reports, including a debt report for user defined period ranges
- Report warning of any customer who is increasing the period taken to pay while, perhaps, reducing their value of orders
- Report on insurance values and expiry date
- Check on the account numbers used in other companies when creating a new customer record (To allow for overall credit insurance)
- Drill down available from transaction line to original order, invoice and detailed order lines
- All changes to master records can be logged and viewed at any stage.

LOGIC Overview and Business Benefits

TEST Company - Customer Account Enquiry

File Edit Help

Account Details A85 Alder Interiors Ltd

Account Information Financial Current Transactions History Transactions

Account Information

Account Type	Open item	Highest Ever	Euro	10,892.18
Balance Base	3,504.29	Turnover This Year		6,462.54
Last cash	731.71	Turnover Last Year		3,725.88
Date Last Cash	06/09/2006	Credit Limit		15,000.00
Date Last Invoice	15/09/2006	Credit Days		60
Balance Last Statement	3,504.29	Statement Frequency	Monthly	
Status	O.K.	Last Statement Date		16/11/2006

Aged Analysis

Balance	3,504.29	Month 4	
Current		Month 5	
Month 1	1,949.35	Month 6	1,153.59
Month 2	419.89	Fwd dated	
Month 3		Unallocated	18.54

Input Range Exit

slesac paul 21-Nov 2006

Purchase Ledger

LOGIC Overview and Business Benefits

The key benefits and features of the LOGIC Purchase Ledger (PL) are as follows:

- User definable payment terms with automatic calculation of due dates, though these dates may be overridden by the user
- Payments due report available taking into account due dates, credit notes due and unallocated payments
- The above report can be output to a file to enable editing and automatic update back to the purchase ledger accounts
- User definable means of payment
- User definable remittance advice and cheque formats
- Multiple search key facility
- Memo facility at account and transaction level as standard
- Cleared transactions can be held in an accessible history file
- Each account may be assigned to user defined analysis codes which can be used to select accounts listed in reports
- Aged balance and detail reports, including credit reports for user defined period ranges
- Drill down available from statement transaction line to invoice and, if goods for resale, the details of each order line
- All changes to master records can be logged and viewed at any stage.

LOGIC Overview and Business Benefits

General (Nominal) Ledger

The key benefits and features of the LOGIC Nominal Ledger (NL) are as follows:

- Automatic transfer of postings from other LOGIC and third party ledgers
- Posting of journals both debit and credit
- Posting of accruals with automatic accruals reverse
- Maintenance of multiple budgets
- Normal Profit/loss, Balance sheet and trial balance reporting
- All transactions show the transaction list reference whether printed or not
- Drill down available from a transaction to show all other transactions posted at the same time
- Bank reconciliation option available within the Nominal Ledger
- Option to post transactions on a regular basis (Diary facility)
- Option to produce transaction lists on a regular basis or only when required
- Memo facility at account and transaction level as standard
- Cleared transactions can be held in an accessible history file
- Detailed enquiry available for current year and any other previous years held
- Postings can continue to be made to the new year before the old year is closed
- VAT summaries are available for selected periods. These details are extracted from the various ledgers and displayed in summary form. Details of all transactions making to summary are available
- All changes to master records can be logged and viewed at any stage.

LOGIC Overview and Business Benefits

Business which benefit from LOGIC

Business

Business benefits

Import – Distributor white/brown goods

- Increased order throughput with no additional staff
- Automatic waste charges
- Flexible pricing
- Control on credit insurance even over multi-companies
- Automated warehousing
- Optimum stock holding
- Service option

Import – Distribution foodstuffs

- Dual quantities – Cheese and weight etc
- Increased order throughput with no additional staff
- Flexible pricing
- Control on credit insurance even over multi-companies
- Optimum stock holding
- Automated warehousing
- Control of sell by dates

Distributor wine and spirits

- Dual quantities – Dozens and single bottles
- Increased order throughput with no additional staff
- Flexible pricing
- Control on credit insurance even over multi-companies
- Optimum stock holding
- Automated warehousing
- Trade counter option