

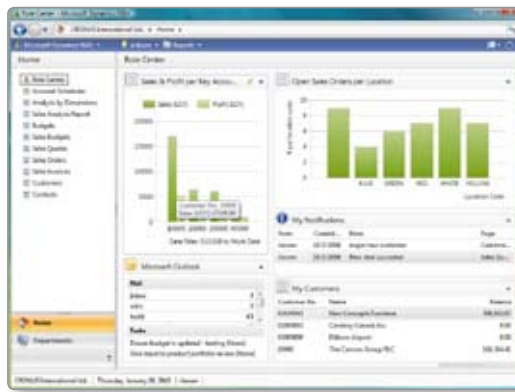


Business Intelligence in Microsoft Dynamics NAV 2009

BENEFITS

- **Deliver decision-driving information across your organization.** Employees can access real-time overviews of business metrics; drill down into the details of transactions, customer records, and histories; and keep their finger on the pulse of your business operations with information viewed and accessed through their Role Centers.
- **Fuel productivity with relevant information and tools.** With access to up-to-date information and powerful analysis and reporting tools, employees can monitor performance, analyze trends, and spot potential problems before they occur.
- **Work smoothly with Microsoft Office programs.** Tight integration across Microsoft Dynamics NAV with familiar programs such as Microsoft® Office Excel® makes it easy to access, analyze, and share information—without having to juggle applications.
- **Help accelerate business insight with SQL Server technologies.** Meet demanding requirements for data management and analysis and quickly build customized reports with Microsoft SQL Server® 2008 and SQL Server Reporting Services.

Deliver meaningful insight across your organization with powerful business intelligence (BI) capabilities in Microsoft Dynamics® NAV. With access to real-time data and a wide range of analytical and reporting tools—including graphical displays, online analytical processing (OLAP) cubes, and Web-based delivery options—people can make informed, confident decisions that help drive business success.



Business intelligence can be delivered directly into your Role Center. With access to detailed data, you can easily use and share it with others.

Personal and team BI for tactical decision-making

Microsoft Dynamics NAV provides RoleTailored access to real-time, integrated data and analysis tools that can help individuals make fast, informed decisions. Role Centers give people visibility into relevant business activities, such as tasks, notifications, lists, key performance indicators (KPIs), and reports.

Microsoft Dynamics NAV supports a range of business insight tools. Tight integration with Excel enables people to easily export data for analysis and manipulation. With Report Designer in SQL Server Reporting Services built into Microsoft Dynamics NAV, people can quickly create intuitive, interactive reports and create PDFs for broad distribution.

Organizational intelligence for strategic decision-making

With built-in tools, managers can create 360-degree views of business performance, create and view graphical displays and reports, and analyze detailed information. Microsoft Dynamics NAV also works with other sophisticated Microsoft applications to help your business meet exacting analytic and reporting requirements. For example, SQL Server Reporting Services and SQL Server Analysis Services expand the value of business data with advanced reporting, OLAP analysis, and data mining.

FEATURES

Business Analytics	<ul style="list-style-type: none">• Work easily with advanced analytical tools for a comprehensive view of business performance.• Set up and review graphical displays and reports.• Perform targeted analysis of any detailed information in Microsoft Dynamics NAV for deep insight into areas of your business.
Flexible information views	<ul style="list-style-type: none">• Sort and filter data, drill down to details, and create graphical displays to view and analyze sales and profitability trends, inventory movement, orders and fulfillments, marketing campaigns, and more.
Microsoft Office integration	<ul style="list-style-type: none">• Extract, analyze, and present data from across your business while working within familiar Microsoft Office programs such as Excel, Microsoft Office Word, and Microsoft Office Outlook®.• Export data in any format using Microsoft Office Open XML Formats.
Employee Portal	<ul style="list-style-type: none">• Provide online access to real-time data, reports, and collaboration tools with Employee Portal in Microsoft Dynamics NAV, a Web-based interface built on Microsoft Windows® SharePoint® Services.
Customized reporting	<ul style="list-style-type: none">• Create reports from scratch using step-by-step report wizards, graphical tools, and drill-down capabilities.• Use SQL Server Reporting Services to quickly extract information on an as-needed basis and build contextualized reports using Report Designer.
Dimension attributes	<ul style="list-style-type: none">• Define and assign characteristics to the information you record in your daily work.• Set up dimensions—such as product line, geographic sales region, and time period—and value hierarchies that reflect reporting and accounting needs.
OLAP cubes	<ul style="list-style-type: none">• Work in an intuitive Outlook-like environment to build targeted analyses using predefined or customized OLAP cubes, and then deliver analyses directly to people's desktops.
Record links	<ul style="list-style-type: none">• Add links within Microsoft Dynamics NAV records to external information and then store the data within Microsoft Office SharePoint Server for easy access and sharing.
Open Database Connectivity (ODBC)	<ul style="list-style-type: none">• Enhance reporting and analytics capabilities with an ODBC driver that supports most business intelligence tools in the marketplace.
Integrated Development Environment (IDE)	<ul style="list-style-type: none">• Streamline development with a built-in IDE that enables you to support your specific business requirements and changing needs.

For more information about Business Intelligence in Microsoft Dynamics NAV 2009, visit www.microsoft.com/dynamics/nav.

